

Phonanimals



a

Ally Ant



b

Billy Bus



c

Cally Cat



d

Dilly Dog



e

Elly Elephant



f

Filly Fish



g

Golly Goat



h

Holly Horse



i

Iggy Iguana



j

Jilly Jellyfish



k

Kippy Kangaroo



l

Leo Lion



m

Milly Monkey



n

Nicky Nurse

Phonanimals



o

Olly Octopus



p

Penny Pig



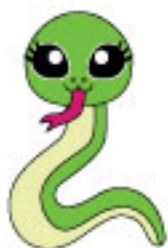
q

Queeny Queen



r

Rabby Rabbit



s

Sissy Snake



t

Tommy Tiger



u

Uncle Umpire



v

Vinny Vampire



w

Windy Witch



x

Loxy Fox



y

Yally Yak



z

Ziggy Zebra

Syllabus

Unit	Targets	Vocabulary	Dialogue	Songs/Chants	Review
1	Learn character names. Say name and ask friends' names. Say: <i>Here you are. Thank you.</i> <i>You're welcome.</i>	Kinka Billy Pinka Betty	I'm Kinka. What's your name? Here you are. Thank you. You're welcome. Hello. Goodbye.	I'm Kinka I'm Kinka (karaoke) Character Chant Here you are. Thank you. Stop. Look. Ready? Go!	
2	Talk about what you see in the picture. Answer: <i>What color is it?</i> Answer: <i>What color do you want?</i>	flower tree house rainbow red yellow green blue	What is it? It's a flower. What color is it? It's red. May I have red, please?	It's a Chant Flower Chant It's a Flower Chant Red, Yellow, Green, Blue Stand Up, Clap, Point and Touch	Kinka Pinka
3	Say toys in the yard. Count to 5 Answer: <i>How's the weather?</i>	ball car bicycle sunny cloudy raining	What is it? It's a ball. Count the balls. 1, 2, 3, 4, 5. It's sunny.	It's a Chant Toy Chant It's a Toy Chant Weather Song 1 to 5 Song	red yellow green blue
4	Say clothing. Act out: <i>Put on your t-shirt.</i> Count to 7. Answer: <i>Where's my t-shirt?</i> Answer: <i>Where are my shorts?</i>	hat t-shirt skirt shorts socks shoes	Where's my t-shirt? There! 1, 2, 3, 4, 5, 6, 7.	Clothes Chant Where's My Hat Put On Your T-shirt 1 to 7 Chant	1 2 3 4 5
5	Say fruit. Say colors. Answer: <i>How are you?</i>	peach banana plum apple purple orange pink green	What is it? It's an apple. It's a banana. I'm hungry. Red apple.	Apple Chant It's an Apple Chant It's a Yummy Fruit Purple, Orange, Pink, Green How Are You?	red yellow green blue 1 2 3 4 What is it? May I have____?
6	Say shapes. Say indoor toys. Do toy actions.	circle heart diamond square triangle robot book doll	What is it? It's my doll. It's a pink heart.	Circle Chant It's a Circle Chant What Shape Is It? They Are My Toys Walk, Run, Hop, Jump	purple orange pink What is it? May I have____?

Syllabus

Unit	Targets	Vocabulary	Dialogue	Songs/Chants	Review
7	Follow commands to count and touch. Count to 10. Say body parts.	head shoulders knees toes fingers 8 9 10	My head. 1, 2, 3, 4, 5, 6, 7, 8, 9, 10	Head Chant Head, Shoulders, Knees and Toes, 1 to 10 My Body Wiggle Numbers 1 to 10 Turn Around	1 2 3 4 5 6 7
8	Say pond creatures. Follow commands to fly, swim, dive, crawl. Ask and answer: <i>Is it a frog?</i>	bee frog ladybug fly butterfly snail spider duck	Is it a bee? No. / Yes.	Bee Chant It's a Bee Chant Is it a frog? The Yes, No Song	1 - 10
9	Say birthday picnic foods and present. Answer: <i>What do you want?</i> Ask and answer: <i>How old are you?</i>	sandwich pizza chips strawberry cake juice tea present	What do you want? A sandwich, please. How old are you? I'm 3.	Sandwich chant The Snack Song A Present Please Kinkajou is Playing Soccer	2 3 4 May I have ___?
10	Say animals. Count the animals 1 to 10. Answer: <i>How many beetles?</i> Say colors black, brown and white.	giraffe pandas bears camels crabs owls turtles squirrels koalas beetles	How many? 1 giraffe. 2 pandas. Brown bears.	Giraffe Chant Count the Animals Black, Brown, White, Red Everybody Line Up	1-10 Colors

Review Activities

Character Puppets

Phonanimals Chart

Legend

S: Student T: Teacher  Play Track  Storytime  Say  Sing